



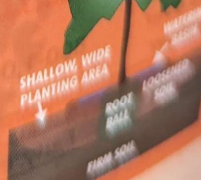
## Honeycrisp Apple

Remove plastic container.

If burlap is present on ball, cut twine around trunk but do not remove burlap.

Loosen soil to create a shallow, wide planting area.

Set root ball on firm soil.



Don't plant the top of root ball lower than surrounding soil.

Backfill with soil.

Loosen soil.

Water thoroughly.

Check for soil level.

Water again.

Water again.

Water again.

Water again.

Water again.

7/14/23

Stone Fruit Tree

Affected Honeycrisp  
Apple Tree

Additional Apple Tree





Front View

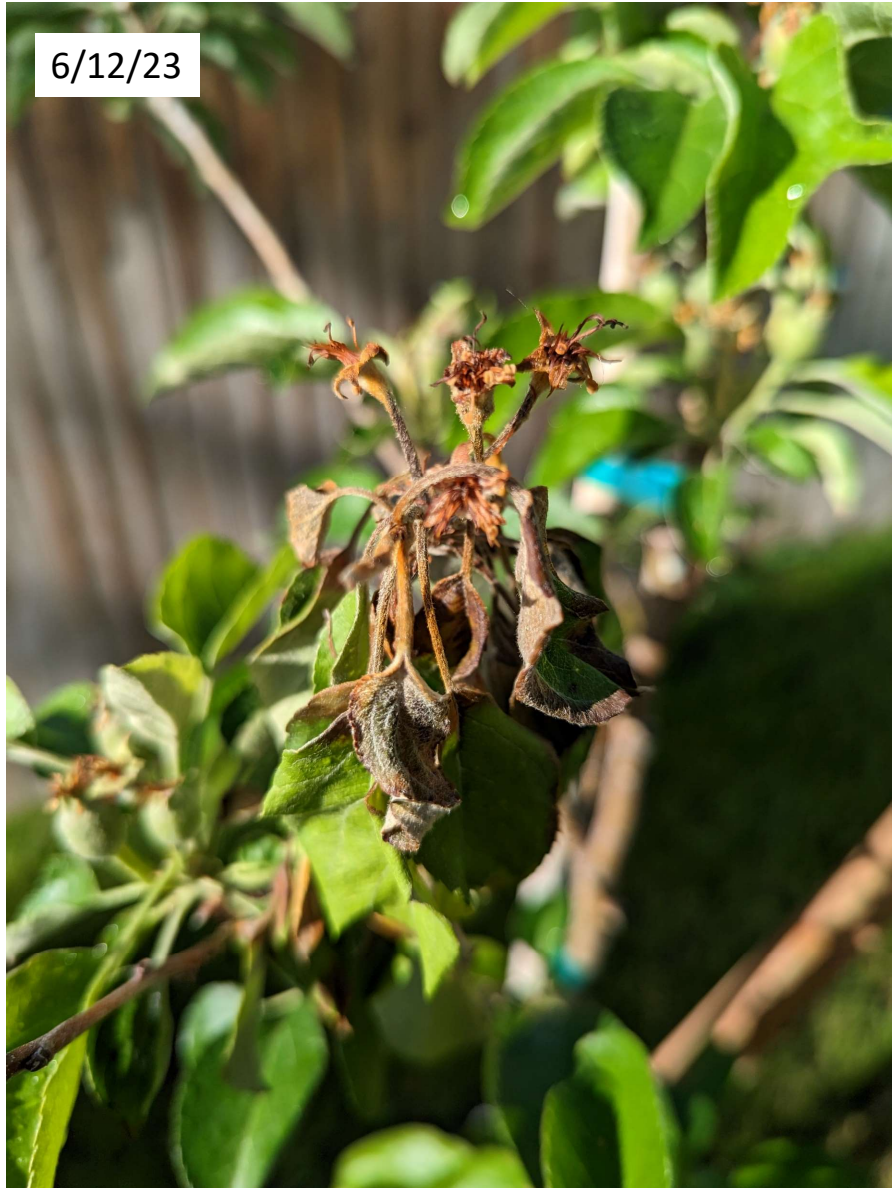




7/12/23



6/12/23



7/14/23

