

# Guidance for Submitting a Good Digital Submission to the Plant Disease Clinic

Although digital diagnosis is more difficult for disease samples than for insect or weed identification, we can often provide at least a preliminary diagnosis if we receive images of good quality. Smartphones generally take good images if you follow a few guidelines.

1. Submit **only** digital images that are clear and in focus.
2. Include ~3 to a maximum of 7 well-focused images that show:
  - a. the pattern of the problem in the location (e.g. field, orchard, nursery, landscape, garden)
  - b. the overall symptoms on the whole plant
  - c. a close-up of the symptoms on an affected plant, including images of **both** leaf surfaces if there are symptoms on leaves
3. Try to avoid strong shadows on the sample; outdoor images taken on a cloudy day are best. When taking pictures indoors, try to illuminate the plant from both sides to eliminate shadows in the photo and place on a neutral background.
4. Please request new images from clients if the images are not of good quality and therefore not appropriate for diagnosing the problem.

## Image Size/File Type

- All images must be in GIF, JPG, PNG, or PDF, but we prefer GIF or JPG.
- Do not send small-size images (e.g. < 500 pixels); ~2,000 pixels is great.

## Examples of Good Digital Submissions

### Boxwood Problem



Well-focused close-up image



Overall image of the whole plant

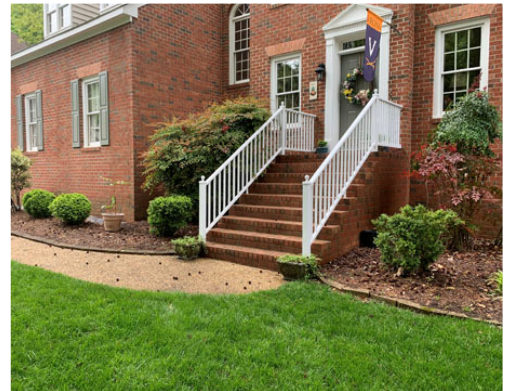


Image of the plant in the landscape

over →

### Cabbage Problem

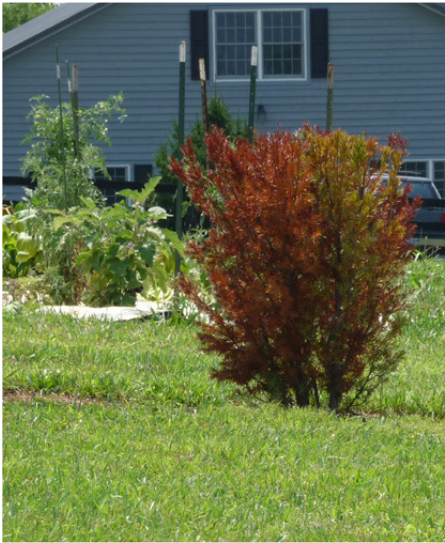


Overall image of the symptoms on the plant



Pattern of the problem in the field

### Yew Problem



Overall image of the symptoms on the plant



Pattern of the problem in the landscape

### Examples of Well-focused Close-up Images

